

DETERMINED FOR SENT A SNU!

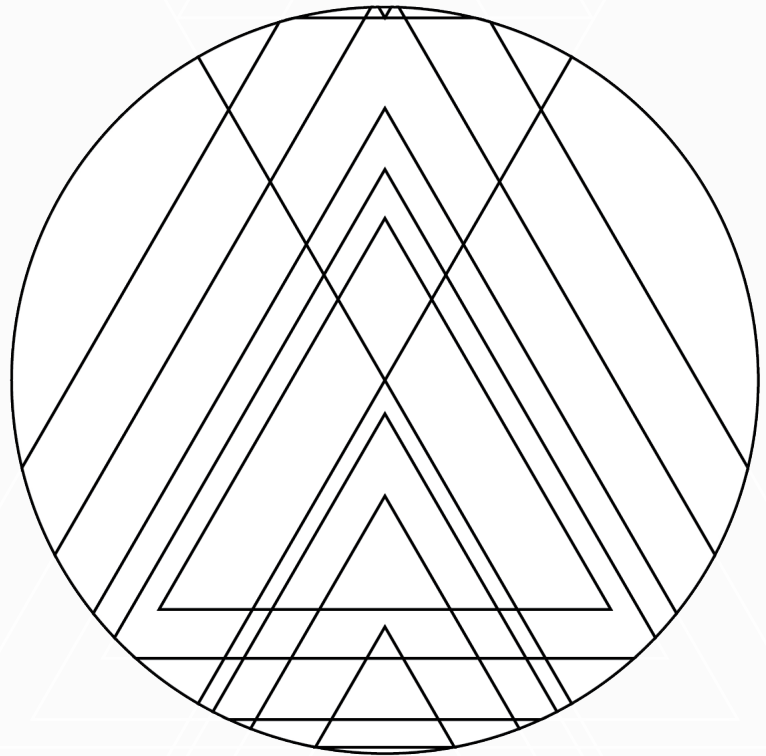
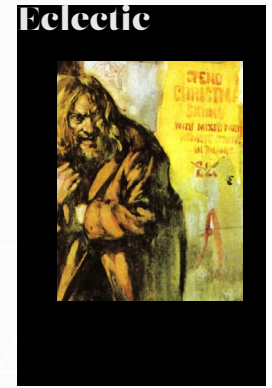
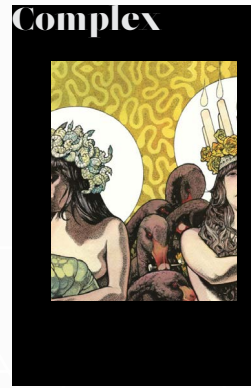
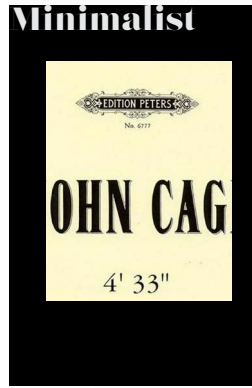
"It's never too late to turn around"

Biarte A. Misund

I entered into the world of Generative Design not knowing much about the topic whatsoever. I'm not going to come out and say that I fully understand it now, but at least I've gained some valuable knowledge that I hope will help me progress within the field.

My three attributes was defined in the first session, and I've kept them all along the course. I'm still not 100% sure if these are the ones that will represent me in the end, but I'm in a process, and in this process these attributes fits me well. They are *Minimalist*, *Complex* and *Eclectic*, and they support both my background and my personality, so I see no immediate reason why they would not fit me as a designer.

I've produced a schematic drawing of a stool, and a cover for a childrens book, but the pictures represented in this article has greater importance in my Generative Design Experience.



Catalysts:

